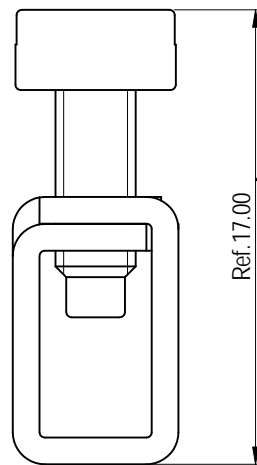
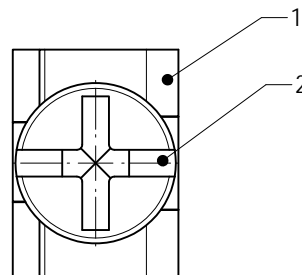
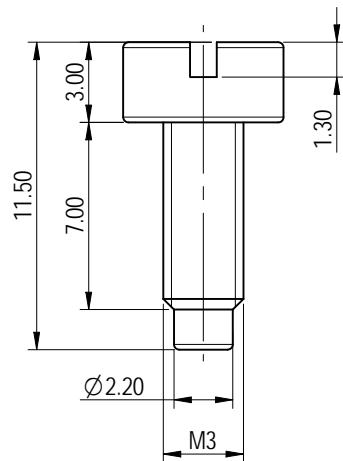
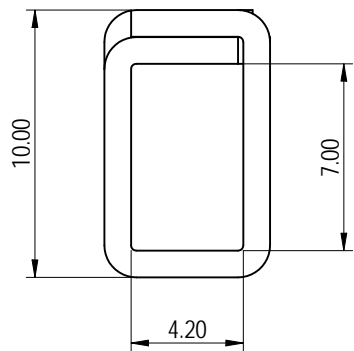
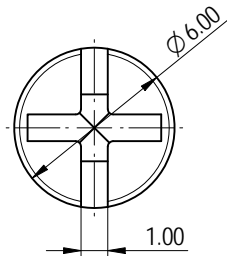
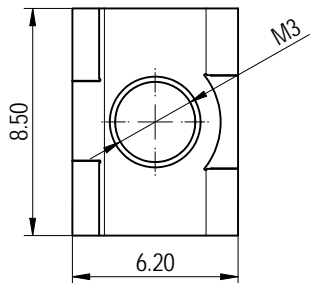
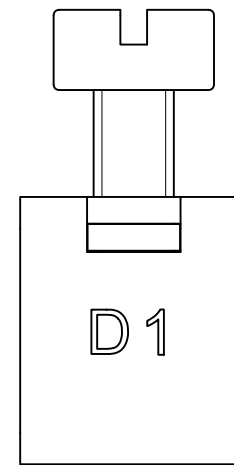


未注公差/General tolerances (mm)													D		
0	>3	>6	>10	>18	>30	>50	>80	>120	>180	>250	>315	>400		>500	0.1/10
~	~	~	~	~	~	~	~	~	~	~	~	~	~	~	N
±0.12	±0.18	±0.22	±0.26	±0.31	±0.37	±0.57	±0.80	±0.93	±1.05	±1.15	±1.60	±2.20	±2.50	±2	



Screw preassemble status only for reference



Please refer to the 3D model, for those unmarked dimensions.

2:1

2	Screw	Steel	Zn Plated
1	Cage	Steel	Zn Plated
ITEM	NAME OF PART	MATERIAL	NOTES
螺丝扭矩/Torque Tightening(N·m/Lb·in)		M3, 2.0/17.71	
螺丝拧紧一次/Screw tightening once		无卡死/No Jammed	
符合RoHS环保要求/Conform to RoHS		Yes	

<b>DIAGSON</b>		MATERIAL:		SURFACE/COLOR:	
APPD: 蓝黄凡	2023.11.09	MAT NO./REV: 10900000274 / 00		MAT STATUS: 批量	
CHKD: 曹利彬	2023.11.09	NAME: K154-00Z (H)			
DRFT: 孙科豪	2023.11.09	DRAWING NO.:	TYPE:	DRAWING STATUS:	SCALE:
		200157956	CUSTOMER DRAWING	已发布	5:1
				SHEET:	1/1

00	REV	ECN	DESCRIPTION	DRFT	DATE	④	A3	1/1	(Inch)
----	-----	-----	-------------	------	------	---	----	-----	--------

Transfer or duplication of this document as well as the utilization or reproduction of its contents without the written consent of the copyright holder is prohibited. All rights reserved for patent. 本文件及其中所载之技术内容，未经权利人书面许可，不得擅自复制或传播。本文件及其所载之技术内容，受法律保护，未经许可，不得复制或传播。所有权利保留，侵权必究。